

## Wallet machine WalletLine

Modular platform  
for the production of  
Wallet packages.



Wallet packages are an ideal platform for consumer-orientated products. They are somewhat more expensive in comparison with to regular folding cartons. In terms of handling and additional benefits however, wallet packs address the consumer more directly. Wallet packs are far superior to pure blister packs in terms of information variety and customer benefit.

They allow the integration without difficulty of analysis aids, scales, tables and even diagnostics, test applications and sample packs.

Inserts such as booklets, brochures, reply cards and similar can also be integrated as well as guide systems for administering help or brief usage instructions.

Applications for self-diagnosis and even chip cards can also be included. With targeted use this opens up lucrative markets – with good prospects for increasing turnovers and revenues. This alternative packaging solution is therefore the trend.

### Product variety is our program:

The WalletLine processes wallets with up to 5 panels transversely to passage direction and 2 panels in passage direction.

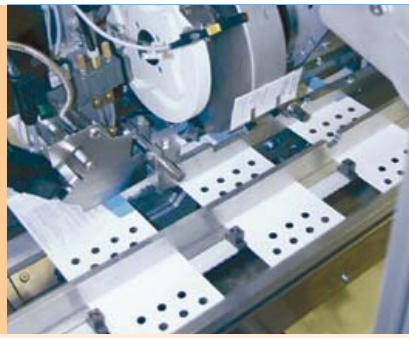
Alternatively, diverse closure variants are available, such as glue beads, with seal-of-purchase closure or a closure with a resealable label.

### Process sequence - wallet production

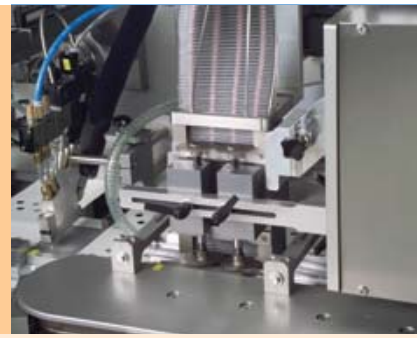




Feeding wallet blanks



Lateral booklet feed



Positioning the blister in the blank

**All inclusive with the WalletLine:**

Höfliger also offers all the complimentary systems linked to the Wallet unit for:

- Product conveyance
- Handling
- Layer-accurate feed and positioning
- Locating the product components
- Integrating the checking units for monitoring and documenting critical parameters
- Laser coding or imprinting

Due to the integrated size range varying sizes and shapes can be realized at low cost. The WalletLine can be interlinked with every blister machine and end-packaging technique - both for intermittent and continuous motion operation.

The individual components are fed via a topleading process, glued in place and enclosed in the pack during the folding process.

Processes such as the following take place: imprinting, gluing, folding, labeling, closing, sorting, grouping, end packing through to the palletisation ready for shipping.

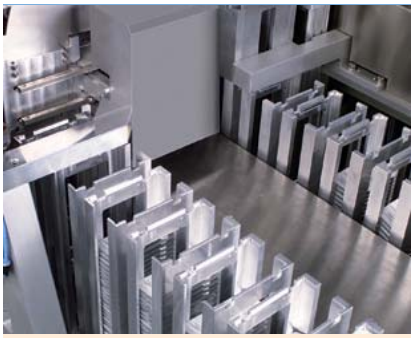
The entire WalletLine is erected, tested, qualified and factory-acceptance tested at Höfliger's plant.

The relevant line concept takes into consideration country-specific package variants as well as synchronization of the line, and the line's components with existing production units.

The fact that surprisingly innovative solutions are created time and again, such as the folding of the wallet card counter to machine pass direction, is part of the credo of Höfliger engineers.

# WALLETLINE MODULES

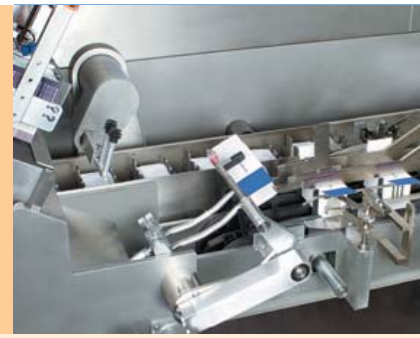




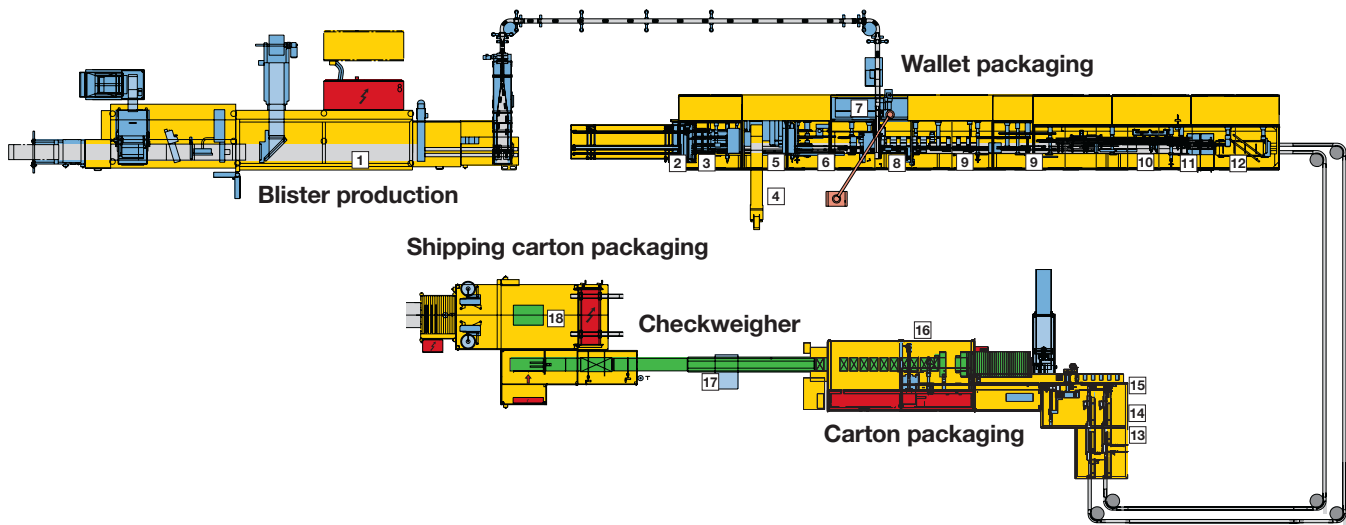
Buffer systems increase the overall efficiency of a complete line



Turning wheel for turning the packages to the correct position before cartoning



Cartoning for optimal product protection



**Production sequence**

- |                                 |                                    |
|---------------------------------|------------------------------------|
| 1 Production of tablet blisters | 10 Label infeed                    |
| 2 Wallet infeed                 | 11 Wallet labelling                |
| 3 Presence check                | 12 Spread on 2 tracks              |
| 4 Booklet infeed                | 13 Product buffer                  |
| 5 Position check booklet        | 14 Stacking                        |
| 6 Laser coding                  | 15 Stack turning                   |
| 7 Blister infeed                | 16 Cartoning                       |
| 8 Position check blister        | 17 Checkweighing                   |
| 9 Folding wallet                | 18 Packaging into shipping cartons |

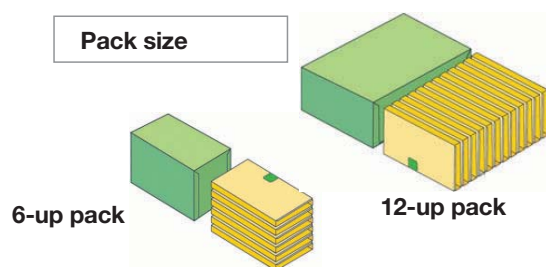


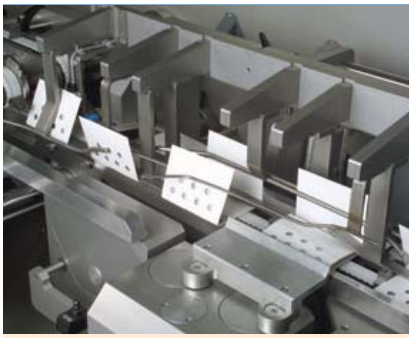
You will find further informations in our brochure "Wallet Manual".

**Technical data**

**Output**  
**Wallet machine** up to 300 wallet packs / min.  
**Output**  
**Cartoning machine** up to 100 wallet packs / min.

**Pack size**

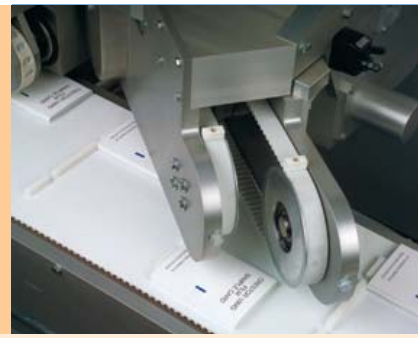




Falten der Walletpackungen



Verschließen der Packungen mit einem Etikett



Ausleiten der fertigen Wallets

#### Packungsentwicklung – individuelle Beratung:

Weit vor der Entwicklung von anlagentechnischen Konzepten können wir unsere „Wallet-Kunden“ bei der Umsetzung von globalen Produktkonzepten beraten. Hier läuft unser jahrzehntelanges Expertenwissen über das technisch Mögliche zusammen mit dem Wissen über die Produktion hochwertiger Präparate.

#### Höfliger bietet Ihnen:

- Beratung bei der Ausführung des Produkts sowie Ausstattung mit zusätzlichen Komponenten (z.B. Info-Bundles, Patienten-Sticker, Child-Proof Varianten etc.)
- Effiziente Packmittel-Produktion der flachen Packungszuschnitte
- Design diverser Produktvarianten
- Kooperation mit führenden Verpackungsmittel-Herstellern
- Auswahl zwischen Siegelack- und Heißbleim-Verfahren



#### Höfliger Turn-key Service

Von Höfliger erhalten Sie eine komplette Maschinenanlage nach Ihren Wünschen von A – Z. Als Systemlieferant bindet Höfliger in enger Zusammenarbeit mit Kunden und Technologiepartnern Fremdmaschinen und –aggregate in Komplettlösungen ein.

#### In enger Zusammenarbeit mit dem Kunden bietet Höfliger folgende Serviceleistungen rund um die WalletLine an:

- Umfassende Beratung bei allen Projektschritten
- Durchgängiges Projektmanagement für größtmögliche Transparenz
- Über 20 Jahre Erfahrung in der Wallethtechnologie
- Komplette Synchronisation der Linie mit anschließender Abnahme im Herstellerwerk
- Einheitliche, auf die Bedürfnisse des Kunden abgestimmte Validierungsdokumentation